



# GAT MONTHLY MEMBERSHIP PROGRESS REPORT

Results as of: 4/30/2022

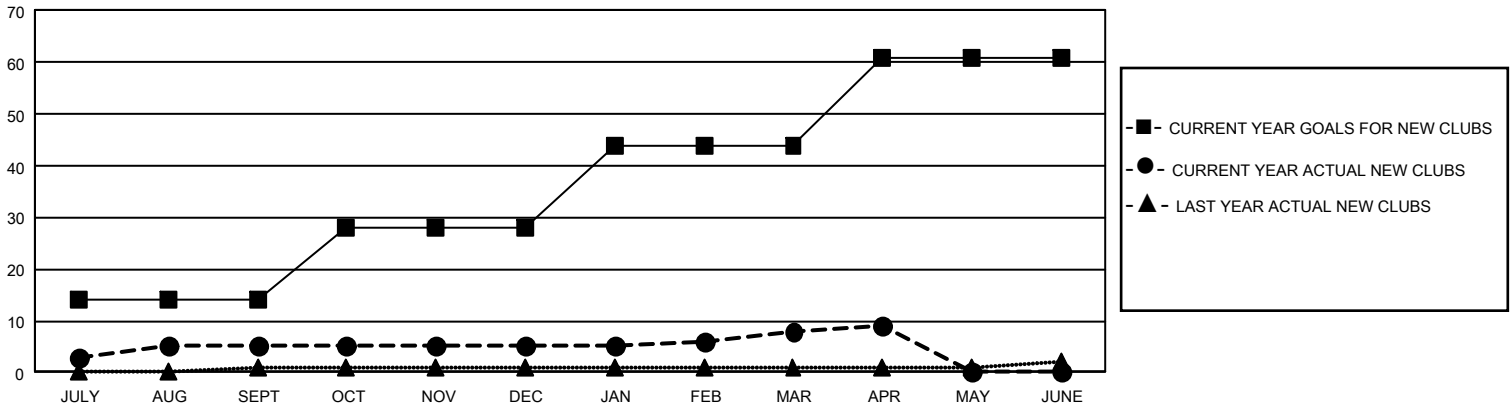
## GAT Constitutional Area 5 - China

REPORT DOES NOT INCLUDE CLUBS IN UNDISTRICTED AREAS.

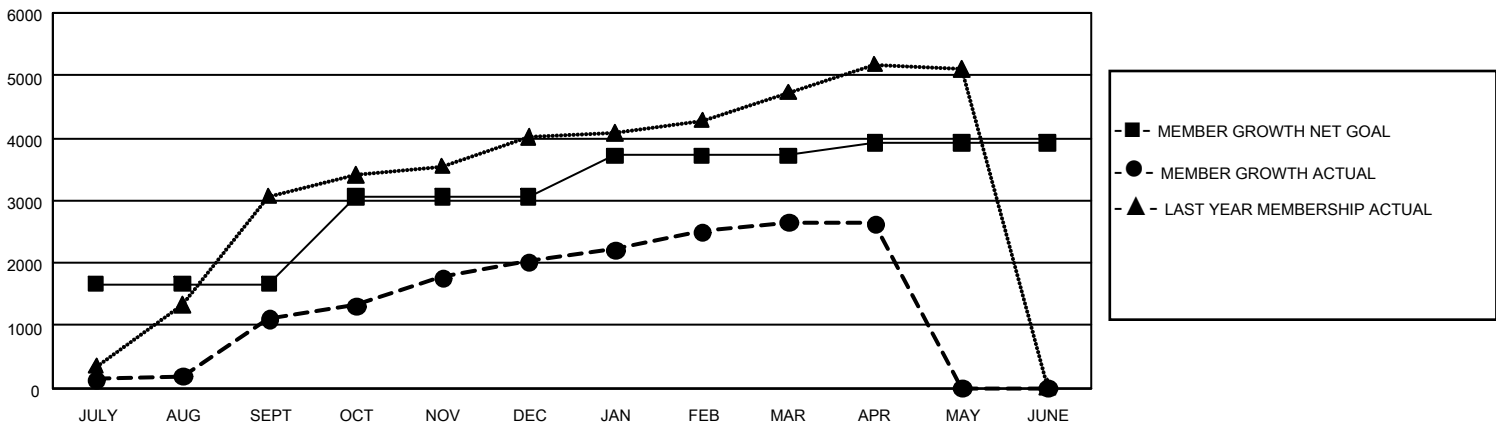
Clubs			
RESULTS FOR 2021-2022			
QUARTER	NEW CLUB GOAL	NEW CLUBS	DROPPED CLUBS
JULY/AUG/SEPT	42	5	10
OCT/NOV/DEC	42	0	3
JAN/FEB/MAR	48	3	0
APR/MAY/JUNE	51	1	0

Members			
RESULTS FOR 2021-2022			
QUARTER	MEMBER GROWTH NET GOAL	MEMBER GROWTH ACTUAL	DROPPED MEMBERS ACTUAL (including transfers)
JULY/AUG/SEPT	1668	1,765	404
OCT/NOV/DEC	1398	1,465	302
JAN/FEB/MAR	651	877	154
APR/MAY/JUNE	202	134	135

GOALS AND ACTUAL NEW CLUBS CUMULATIVE



GOALS AND ACTUAL MEMBERS CUMULATIVE



DROPPED CLUBS: 13

803 CLUBS OF 1,363 ADDED 1 OR MORE NEW MEMBERS

GENDER DISTRIBUTION

MALE	21,646 (62.06%)
FEMALE	13,231 (37.94%)
NON BINARY	0 (0.00%)
PREFER NOT TO ANSWER	0 (0.00%)

DROPPED MEMBERS

[CLICK HERE FOR CUMULATIVE MEMBERSHIP DATA](#)

DECEASED	17
CLUB CANCELLED	90
OTHER	888
<b>TOTAL</b>	<b>995</b>

TOTAL FAMILY UNIT MEMBERS	2,231
FAMILY MEMBERS PAYING HALF DUES	1,145